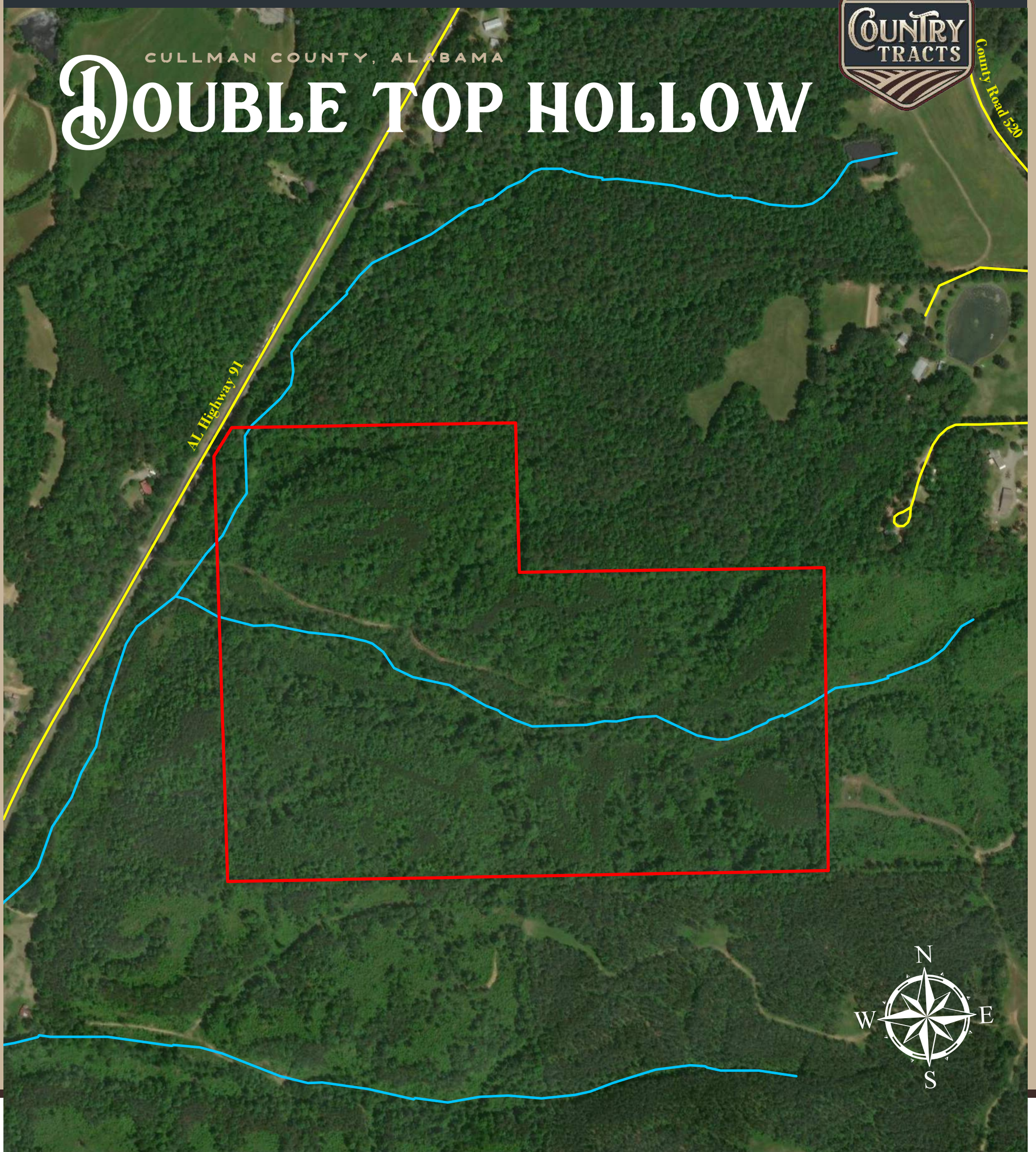




CULLMAN COUNTY, ALABAMA

# DOUBLE TOP HOLLOW



## LEGEND

-  Road
-  Stream
-  Parcel boundary

## FEATURES

- Seasonal Creek
- Convenient Access
- Hilltop Mountain Views
- Wildlife
- Hunting
- Unrestricted

**103.35+/- Acres**

"ALL BOUNDARY LINES DEPICTED IN MAPS, AERIALS, PICTURES OR VIDEOS ARE ESTIMATES AND SHOULD NOT BE RELIED ON AS LEGAL DOCUMENTS"